

Navigating Bioethics Issues in Healthcare Mergers

Challenges & Opportunities

Navigating Church Teachings

Catholic Healthcare

- 2000 years
- Tradition (Scripture interpreted by church)
- Pope
- Catechism

Adventist Healthcare

- 160 years
- Sola Scriptura (Scripture interprets itself)
- Ellen White
- 28 Fundamental Beliefs

Navigating Church Teachings & Fundamentalism

Catholic Church

- 2000 years
- Tradition (Scripture interpreted by church)
- Pope
- Catechism

Adventist Church

- 160 years
- Sola Scriptura (Scripture interprets itself)
- 7th Day Sabbath
- White
- 28 Fundamental Beliefs



Navigating Bioethics Issues in Healthcare Mergers

Catholic Healthcare

- Rich history of caring for those who are ill
- Teachings of Jesus applied in life
- Bible as collection of stories that teach how to live together

Adventist Healthcare

- Rich history of nurturing the health of our communities
- Teachings of Jesus applied in life
- Bible as collection of stories that teach how to live together

Navigating Bioethics Issues in Healthcare Mergers



Nine areas of concern in the Joint Operating Agreement (JOA) Moral Analysis to Consider

- 1- Commitment to Health and Healing
- 2- Adventist Views toward the Catholic Church
- 3- Adventist Statement on Values
- 4- Sexually Transmitted Diseases
- 5- Contraception in Marriage
- 6- Abortion
- 7- Assisted Reproduction
- 8- Care of the Dying
- 9- Employer-Employee Relationships and Unions

Ascension, upholds “System Policy #1” – To fully express its identity as a ministry of the Catholic Church

Consistent with Church teachings – *Ethical and Religious Directives for Catholic Health Care Services (ERD)*

Seven principles in Policy #1:

1- Solidarity with Those Who Live in Poverty

2- Holistic Care

3- Respect for Human Life

4- Stewardship

5- Participatory Community of Work and Mutual Respect

6- Act as a Ministry of the Church

7- Fidelity

AdventHealth – “Mission and The Management of an AdventHealth Facility – Where We Came From, Who We Are, and How We Manage.”

There are six substantive sections meant to express “historic, ecclesiastic, moral, and ethical foundations for health care delivered by AdventHealth:

1-Social Responsibility

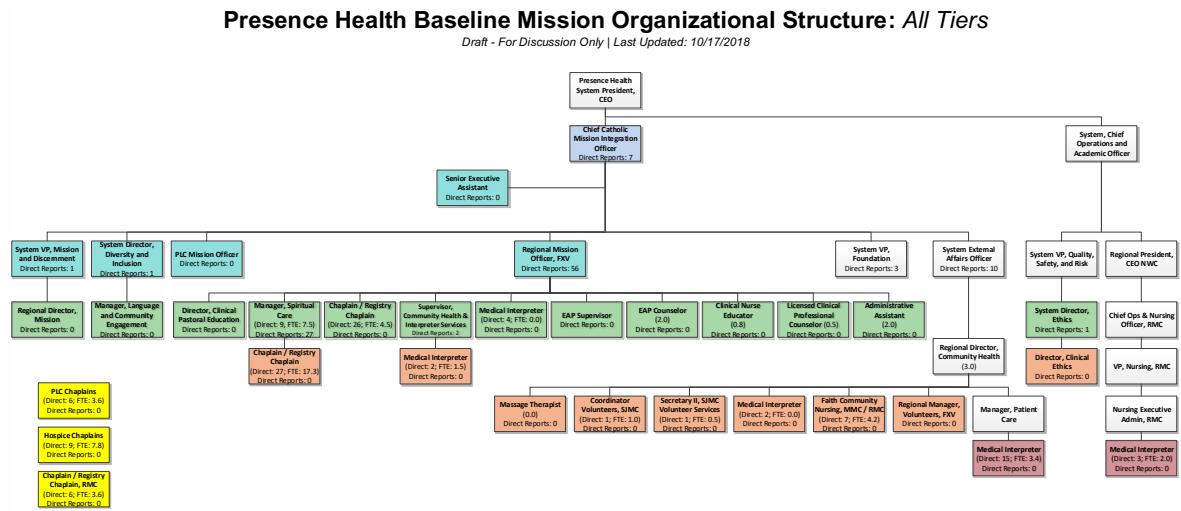
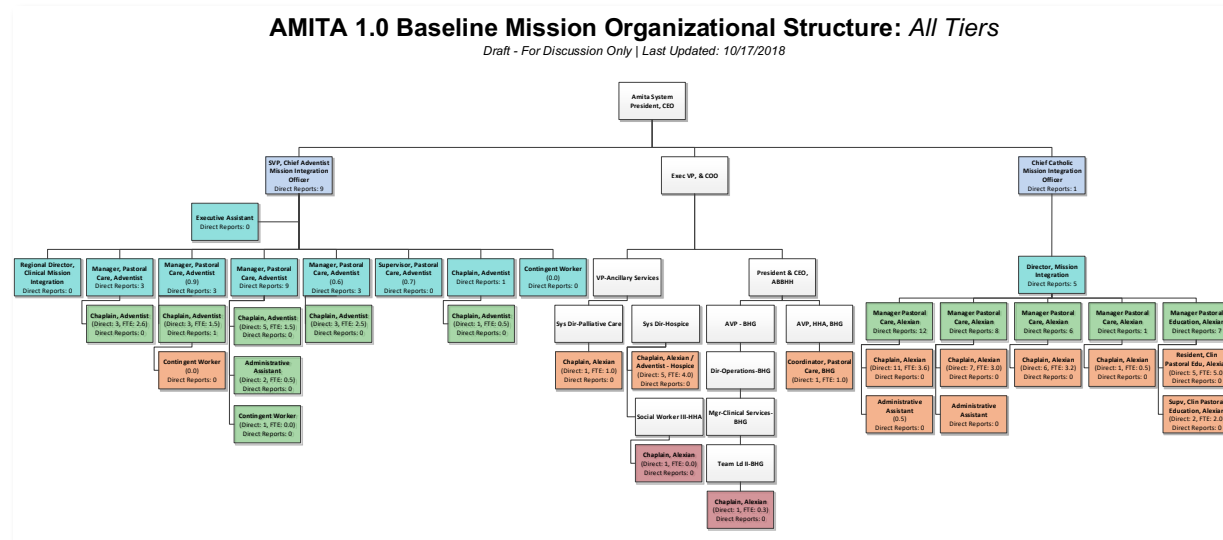
2- Pastoral/Spiritual Care

3- Seventh-day Adventist Church and Beliefs

4- Clinical Care

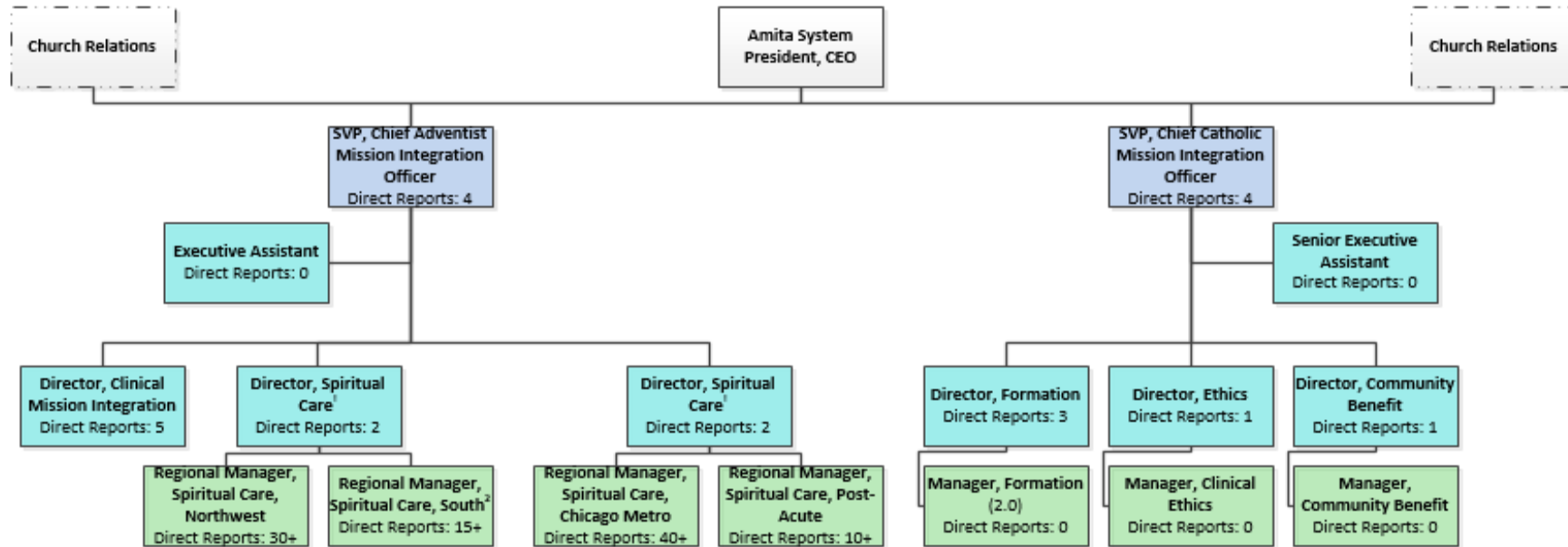
5- Business Relationships

Legacy Mission Organizational Structures



AMITA 2.0 Mission Org Structure

Tier 1 - Manager



All capabilities will be co-lead by both CMIOs

1 - Spiritual Care to be guided by Adventist CMIO, though co-lead by Catholic CMIO; one Adventist director and one Catholic director
2 - This position will also oversee Spiritual and Pastoral Care at Glen Oaks



**DENVER-METRO GROUP
MISSION & MINISTRY**

